

**INSTALLATION PROCEDURE: FIRE-RATED ENCLOSURES**

**CAUTION:**

**BEFORE INSTALLING ENCLOSURE:**

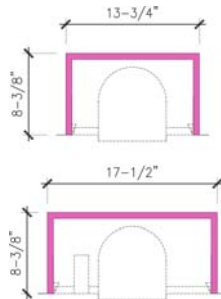
1. READ CHART BELOW TO VERIFY FIXTURE COMPATIBILITY.
2. INSPECT ENCLOSURE FOR DAMAGE.
3. IF NO DAMAGE FOUND, INSTALL AS INSTRUCTED BELOW. FAILURE TO DO SO VOIDS UL LISTING AND FIRE-RATED CLASSIFICATION OF THESE PRODUCTS.

**FIRE-RATED ENCLOSURE TYPE**

**ENCLOSURE DIMENSIONS**

**LIGHT FIXTURE TYPE**

LITEHOUSE L7



ANY UL LISTED INCANDESCENT LIGHT FIXTURE WITH A MAXIMUM DIAMETER OF 6-13/16 INCHES.

ANY UL LISTED COMPACT FLUORESCENT LIGHT FIXTURE WITH A MAXIMUM DIAMETER OF 6-13/16 INCHES.

**1. INSTALL ENCLOSURE**

Place enclosure between floor/ceiling joists with bottom edge of flange flush with the bottom edge of the joists adjacent to the ceiling plane. Attach to joists using (4) 2" drywall screws evenly spaced 2 on each of the two sides of the enclosure that are against the joists. See Fig. 1. If joists are spaced greater than 16 inches on center, 2x4 (4 inch dimension vertical) or greater lumber shall be used to span between joists at the plane of the ceiling to create a 16 inch on center space to mount the fixture as shown in Fig. 2

**2. WIRE FEED**

Feed electrical conduit and or wiring into the enclosure through a hole with a maximum diameter of 3/4" provided by electrician in the sidewall. See Fig. 3.

**3. INSTALL LIGHT FIXTURE**

Install light fixture as directed by manufacturer making sure that the bottom edge of the light fixture aligns with the bottom of the enclosure by fastening the light fixture to the metal tabs perpendicular to the gypsum wallboard ceiling. Positive contact of the bottom of light fixture to the ceiling is required to ensure compliance with the UL Classification of the LiteHouse. Maximum light fixture diameter opening in the ceiling membrane shall not be greater than 6-13/16 in. See Fig. 3.

**4. FILL WIREWAY GAPS**

Fill any gaps in the wireway hole with a UL Classified Fill, Void, or Cavity Material (Firestop Sealant). Fill the gap on both the interior and exterior faces of the enclosure opening. See Fig. 4.

**5. INSTALL CEILING AND LIGHTING TRIM KIT**

Install gypsum wallboard ceiling and lighting trim kit as directed by manufacturer.



Fig. 1

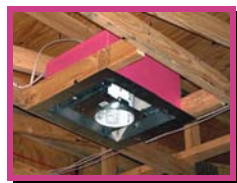


Fig. 2



Fig. 3



Fig. 4