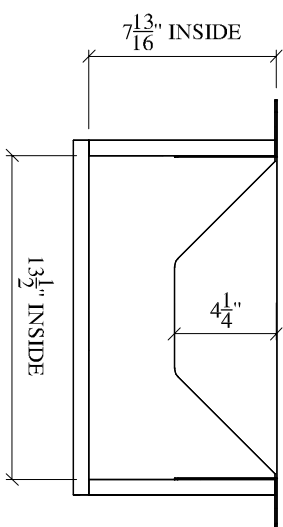
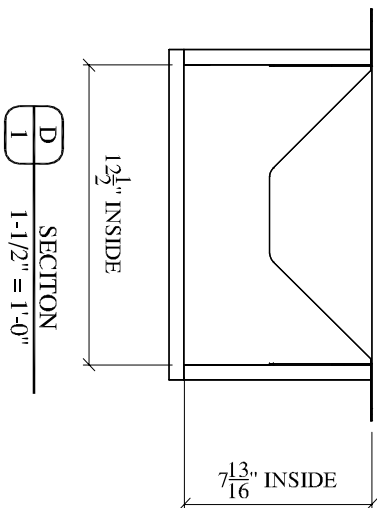
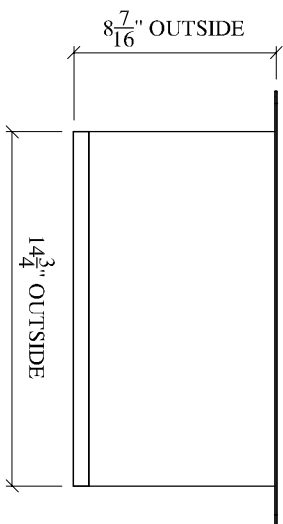
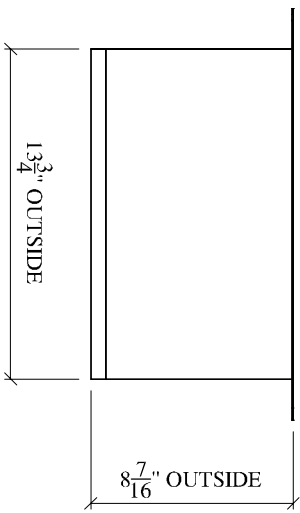
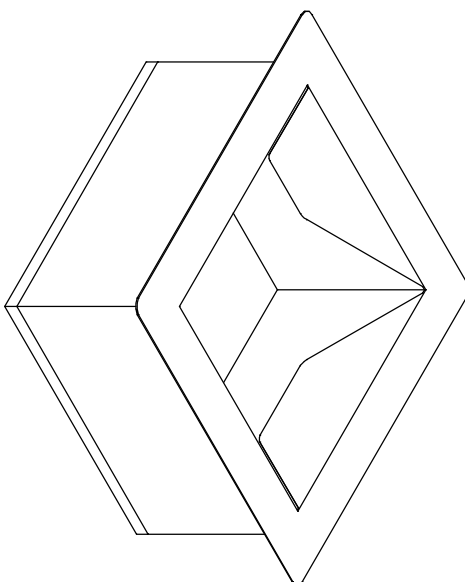
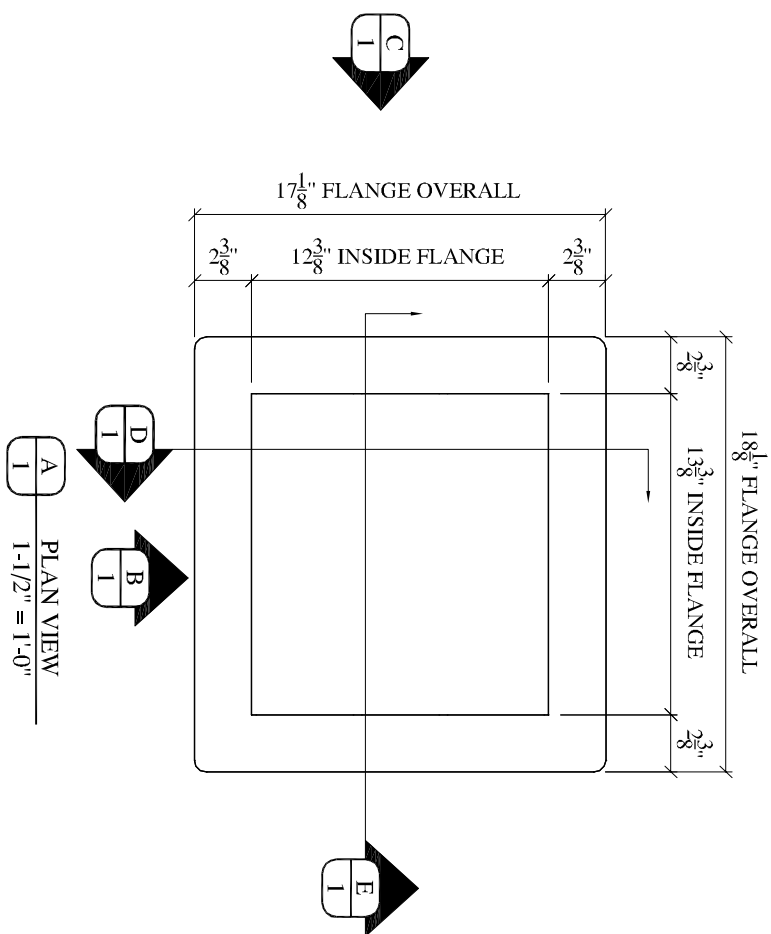


**GENERAL NOTES**

- 1.) BOX TO BE CONSTRUCTED OF  $\frac{5}{8}$ " TYPE-X FIRE RATED DRYWALL. EXTERIOR TO BE TAPED WITH #99255 E-Z TAPE.
- 2.) METAL FLANGE TO BE 22GAUGE GALVANIZED SCREWED TO DRYWALL.
- 3.) LITEBOX INTERIOR CUBIC INCH = 1307.8125



**SUBMITTAL**

APPROVED FOR FABRICATION	REVISE & RESUBMIT FOR APPROVAL
APPROVED AS NOTED	REVISE & RESUBMIT FOR DISTRIBUTION
DEALER AUTHORIZED SIGNATURE	
<small>THIS DRAWING MUST BE SIGNED AND RETURNED TO IDS PRIOR TO BEING RELEASED FOR FABRICATION. ALL SUBMITTAL NOTES MUST BE ANSWERED AND VERIFIED/INITIALED. NO ASSUMPTIONS WILL BE MADE THAT NOTES ARE OKAY IF NOT INITIALED AND EQUIPMENT WILL NOT BE PLACED INTO FABRICATION UNTIL SUCH TIME AS THEY ARE CONFIRMED. APPROVAL OF THIS DRAWING IMPLIES THAT PURCHASER HAS REVIEWED ALL ASPECTS OF DRAWINGS INCLUDING FIELD DIMENSIONS, AND HAS NOTED ANY EXCEPTIONS.</small>	



1120 MID RIVERS INDUSTRIAL DR.  
 ST. PETERS, MO 63376  
 PHONE: (636) 936-2288  
 FAX: (636) 441-1779

DESIGNED FOR:  
 I.D.S.  
 L3 & L5 LITEBOX

DRAWN BY:  
 N. BURCH

DATE:  
 9/23/08

DRAWING #:  
 L3L5BOX

SHEET # 1 OF 1